

Infiniti Commercial Realty

Parkway Centre III

2745 Dallas Pkwy, Plano, TX 75093

Available Sublease

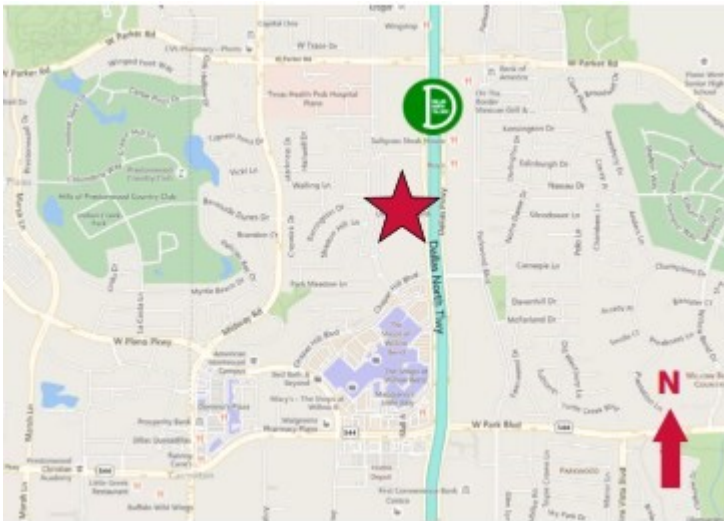
2,584 RSF

First Floor Space



Space Details

- Current Title Company
- Lobby Exposure
- Term Expires February, 2021
- Awesome 1st Floor Space, Suite 140
- Long Term Lease
- Plug n Play Available
- Furniture Available
- Perfect for Title Office or Mortgage Co.
- Upgraded Finishes
- Quoting \$24.00/RSF Plus Elect.
- Elect: \$1.65/RSF



Infiniti Commercial Realty

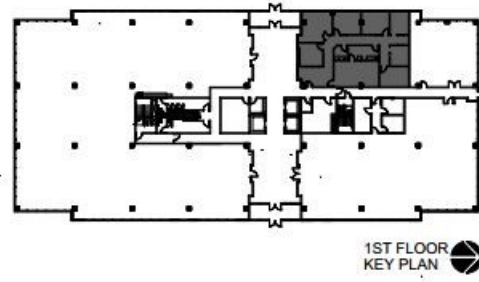
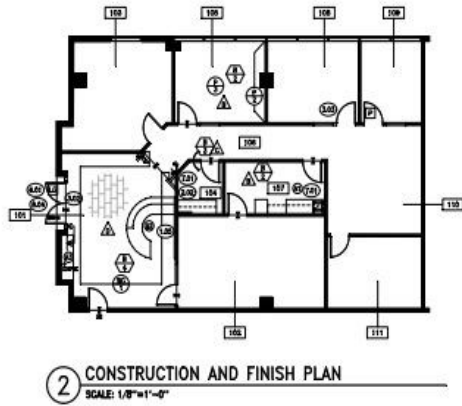
1222 E. Arapaho Road, Suite 329
Richardson TX 75081
www.infiniticre.com

For Information Contact:

Mark Daily
Principal
Ofc: 214-281-8531 Cell: 214-232-3581

Parkway Centre III
2745 N. Dallas Parkway, Suite 140
Dallas, TX 75093

Suite 140



Infiniti Commercial Realty

1222 E. Arapaho Road, Suite 329
Richardson, TX 75081
www.infiniticre.com

For Information Contact:

Mark Daily
Principal
Ofc: 214-281-8531 Cell: 214-232-3581
Mark.daily@infiniticre.com